

APPLICATION:

JOB NAME:

QUANTITY:

PRODUCT NAME:
 SINGLE DECK DUAL
 CONTROL FAUCET

SPECIAL CONFIGURATION
 CHECK BASE MODEL AND OPTIONS

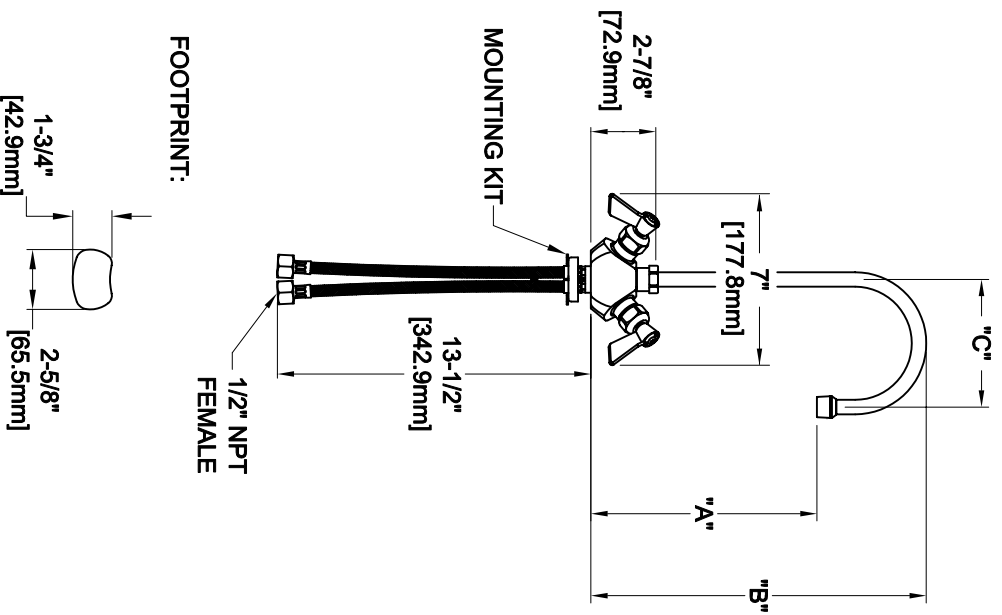
MODEL:

3115 W/ 12" SWIVEL GOOSENECK SPOUT
 1872 W/ 6" SWIVEL GOOSENECK SPOUT

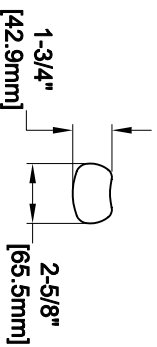
OPTIONS OR MODIFICATIONS:

SUPPLY LINES (24" OR 36") CIRCLE LENGTH
 VANDAL RESISTANT KIT
 HANDLES (CROSS OR WRIST) CIRCLE STYLE
 OTHER _____

ITEM NO.

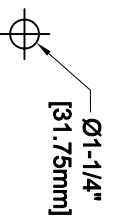


FOOTPRINT:



MODEL	DIM "A"	DIM "B"	DIM "C"
3115	10" [254.0mm]	14" [355.6mm]	5-1/2" [139.7mm]
1872	6" [152.4mm]	9-1/2" [241.3mm]	3-1/2" [88.9mm]

ROUGH-IN:



FEATURES:

- * SINGLE DECK, DUAL CONTROL
- * SWIVELING SEAT DISKS
- * HOT SIDE STEM - RIGHT HAND
- * COLD SIDE STEM - LEFT HAND
- * STAINLESS STEEL SEATS
- * STAINLESS STEEL SEAT SCREWS
- * STAINLESS STEEL HANDLE SCREWS
- * FLEXIBLE INLET HOSES

SYSTEM LIMITS

- * TEMP: 40°F MIN. TO 140°F MAX.
- * PRESSURE 200 PSI MAX. STATIC
- * 2.20 GPM AT 80 PSI

SHIPPING WEIGHT

* 4.75 LBS

ANSI/A112.18.1M

FISHER
 FISHER MANUFACTURING COMPANY
 TOLL FREE: 800-421-6162 - FAX: 800-832-8238
 information@fisher-mfg.com - www.fisher-mfg.com