

JOB NAME:

QUANTITY:

ITEM NO.:

PRODUCT NAME:

TWIST WASTE VALVE

_____ SPECIAL CONFIGURATION
(CHECK BASE MODEL AND OPTIONS)

MODEL:

24899 WITH BASKET STRAINER

OPTIONS OR MODIFICATIONS:

OTHER _____

FEATURES:

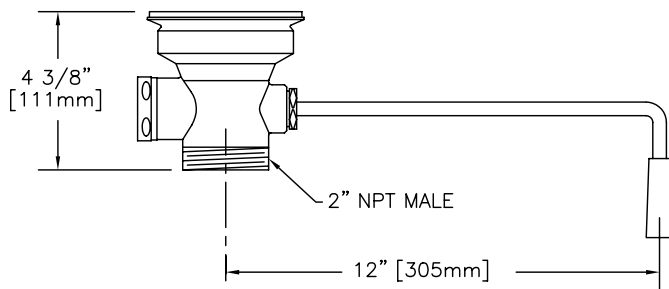
- * 3 1/2" SINK OPENING
- * 2" DRAIN OPENING
- * CAST BRONZE BODY AND WORKING PARTS
- * CHROME PLATED BODY AND WORKING PARTS
- * BASKET STRAINER
- * CSA CERTIFIED

DRAIN RATE:

* 12 GPM

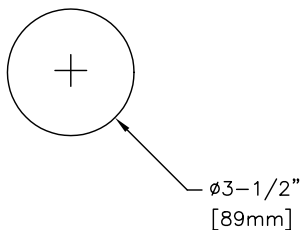
SHIPPING WEIGHT

* 3.8 LBS



ROUGH-IN:

DRAIN:



ANSI/A112.18.1M