

APPLICATION:

PRODUCT NAME:  
**SINGLE DECK BASE**

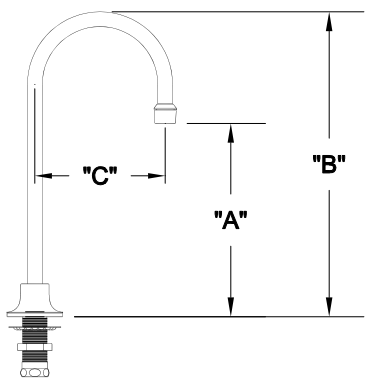
JOB NAME:

SPECIAL CONFIGURATION  
 CHECK BASE MODEL AND OPTIONS

QUANTITY:

ITEM NO.

MODEL:  
 3816 W/ 12" RIGID GOOSENECK SPOUT  
 1937 W/ 6" RIGID GOOSENECK SPOUT



OPTIONS OR MODIFICATIONS:  
 SUPPLY LINES (24" OR 36") CIRCLE LENGTH  
 NIPPLES  
 ELBOWS  
 HANDLES (CROSS OR WRIST) CIRCLE STYLE  
 VANDAL RESISTANT KIT  
 OTHER \_\_\_\_\_

**FEATURES**

\* SINGLE DECK

**SYSTEM LIMITS**

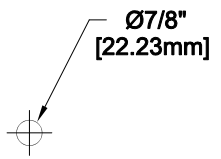
- \* TEMP: 40°F MIN. TO 140°F MAX.
- \* PRESSURE 200 PSI MAX. STATIC
- \* 2.20 GPM @ 60 PSI

**SHIPPING WEIGHT**

\* 3.0 LBS

MODEL	DIM "A"	DIM "B"	DIM "C"
3816	8-3/16" [208.0mm]	12-5/16" [312.7mm]	5-1/2" [139.7mm]
1937	4-7/16" [112.7mm]	8-1/16" [204.8mm]	3-1/2" [88.90mm]

ROUGH-IN:



**FISHER**  
FISHER MANUFACTURING COMPANY  
TOLL FREE: 800-421-6162 - FAX: 800-832-8238  
information@fisher-mfg.com - www.fisher-mfg.com