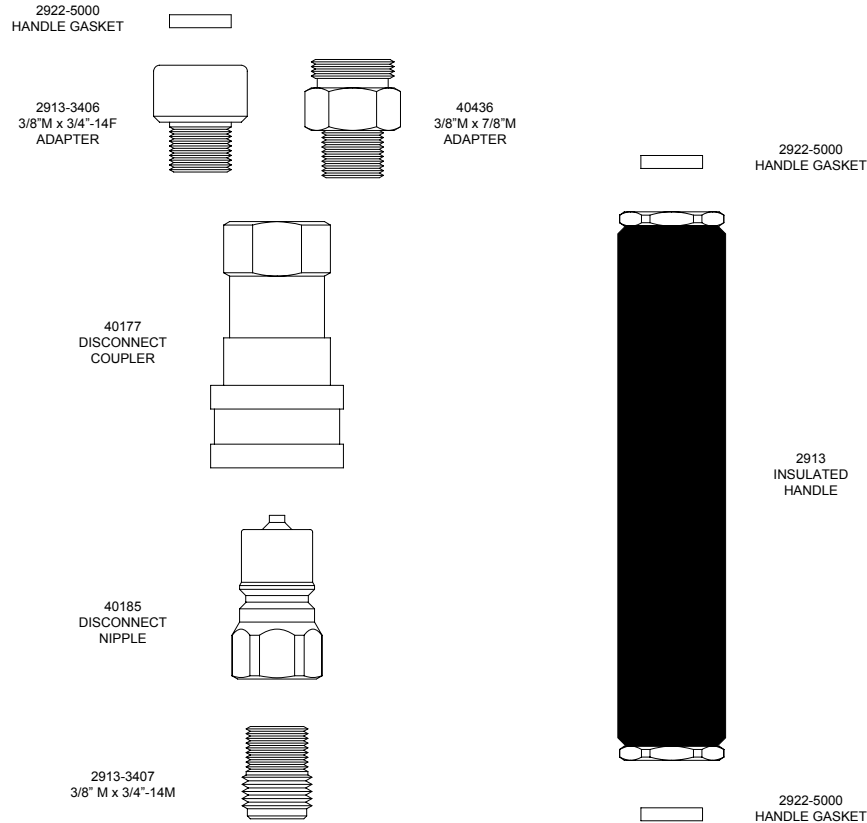


FISHER QUICK DISCONNECT RETRO-FIT KIT



Quick Disconnect Retro-Fit Kit Product Installation Guide



Since 1936, Fisher Manufacturing Company has manufactured heavy-duty, high quality plumbing products and hardware specialties for the food service industry. For three generations, the Fisher family has adhered to a strict dedication of and overall value. When you install Fisher products... you install the best. Our hardware is manufactured with the standardization of internal mechanisms. All chrome plating is triple plated copper, nickel and chrome for durability. Every piece of equipment we make is rigorously tested in both our modern in-house testing center and in actual field situations under extreme conditions. Every detail is thoroughly checked. Before we make our products available to you, they pass each and every test. You get proven performance. Guaranteed.

Limited One Year Warranty

Fisher Manufacturing Company warrants its products and parts thereof (except as noted below) against defects in materials or workmanship for a period of one year after the date of original purchase. During this period Fisher Manufacturing Company will replace a defective product or part without charge to you, provided that the entire product is delivered to Fisher Manufacturing Company. All transportation and insurance charges for shipping the product to and from Fisher Manufacturing Company must be borne by you. Charges for transportation and insurance may, at the option of Fisher Manufacturing Company, be refunded depending upon our investigation of the warranty claim. This warranty does not cover external finish (except at date of original purchase) or labor costs not specifically authorized by Fisher Manufacturing Company.

A full and complete copy of our One Year limited warranty is available upon request.

#40355 - Quick Disconnect Retro-Fit Kit



WARNING:

Proposition 65 requires that we provide you with the following notice: "This product Contains A Chemical Known To The State Of California To Cause Birth Defects Or Other Reproductive Harm."

KEEP THIS MANUAL FOR FUTURE REFERENCE



ANSI/A112.18.1M, ANSI/NSF 61.9

FISHER MANUFACTURING COMPANY • TOLL FREE: 800-421-6162 FAX: 800-832-8238

FISHER
MANUFACTURING COMPANY
PO BOX 60, TULARE, CA 93275
(800)421-6162, FAX: (800)832-8238
www.fisher-mfg.com

Installation Instructions for Retro-Fit Kit

BE SURE TO CHECK WITH YOUR LOCAL DEPARTMENT HAVING JURISDICTION REGARDING BACKFLOW PREVENTION

Installation Notes:

- Be sure to shut off water supply before beginning.
- Use pipe thread sealant such as PST on all threaded joints.
- Check the packaging for missing items BEFORE beginning installation. If items are missing, contact your supplier.

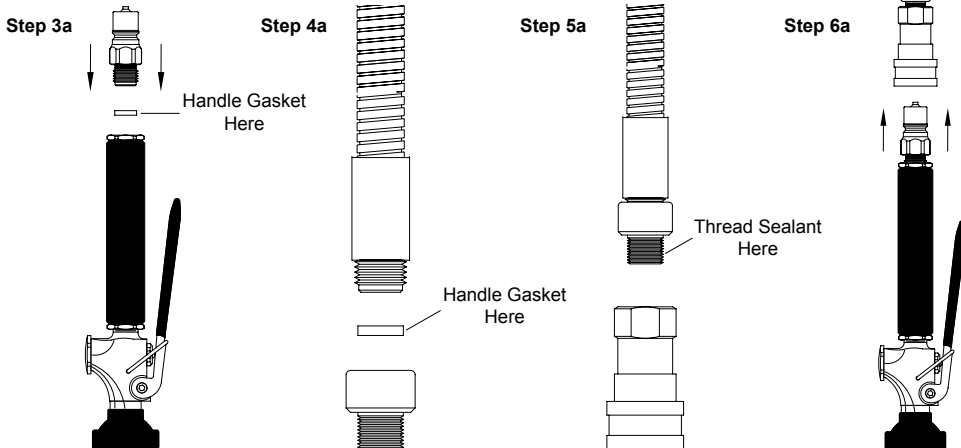
Tools Required for Installation

- Medium Sized Crescent Wrench
- Pipe Thread Sealant
- 1/4" Allen Wrench

This installation guide is intended for use during retro-fit of existing Fisher and T&S Brass Pre-Rinse Units

FOR FISHER PRE-RINSE

- 1a. Begin by removing spray valve and insulated handle from pre-rinse hose. It is not necessary to remove spray valve from insulated handle
- 2a. Apply thread sealant to 3/8" end of Adapter #2913-3407 and attach to disconnect nipple as shown. Tighten using 1/4" allen wrench.
- 3a. Screw adapter and nipple onto insulated handle as shown. Be sure to place a handle gasket between adapter and insulated handle. Tighten using crescent wrench.
- 4a. Screw Adapter #2913-3406 onto free end of stainless steel hose and tighten using allen wrench. Be sure to place a handle gasket between adapter and hose.
- 5a. Screw male end of adapter #2913-3406 into disconnect coupler using thread sealant.
- 6a. Connect spray valve and handle assembly to pre-rinse hose. Turn on water supply and check for leaks.



Installation Instructions Continued

FOR T&S PRE-RINSE

- 1b. Begin by removing existing T&S spray valve and handle from pre-rinse hose. Be careful to keep the existing T&S gasket. Remove handle from spray valve and discard.
- 2b. Fit one of the included handle gaskets inside the outlet of the Fisher insulated handle and mount the existing T&S spray valve to it.
- 3b. Apply thread sealant to 3/8" end of Adapter #2913-3407 and attach to disconnect nipple as shown. Tighten using 1/4" allen wrench.
- 4b. Screw adapter and nipple onto insulated handle as shown. Be sure to place a handle gasket between adapter and insulated handle. Tighten using crescent wrench.
- 5b. Screw Adapter #40436 onto free end of pre-rinse hose as shown. Be sure to place the original T&S handle gasket between adapter and hose.
- 6b. Screw other end of adapter #40436 into disconnect coupler using thread sealant.
- 7b. Connect spray valve and handle assembly to pre-rinse hose. Turn on water supply and check for leaks.

